



Series E push / pull force gauges make job task analysis and ergonomics analysis simple and accurate, ideal for workplace design, strength assessment, and ergonomic studies. Series E presents the ergonomist and other professionals with a simple and economical testing solution. 100 lbF, 200 lbF and 500 lbF (500, 2,500, and 5,000 N) capacity force gauges are available, along with a wide range of attachments for various applications.

Select a pre-configured kit, including a gauge, accessories, and carrying case, or select each item individually to suit particular needs.

## Features & Specifications

- Measure real time and peak push and pull forces
- Three measuring ranges: 100, 200, and 500 lbF (500, 1000, and 2,500 N)
- Accuracy:  $\pm 0.2\%$  of full scale
- Sampling rate: 7,000 Hz
- USB data output
- High / low limit indicators, for pass / fail and minimum force testing
- Averaging mode calculates average force over a period of time
- 5,000-point data memory - data points may be saved individually or logged continuously at up to 7,000 Hz. Data points may be bulk downloaded to included MESUR® Lite data collection software.
- Statistical calculations for saved data points
- Includes an AC adapter/charger, rechargeable battery, MESUR® Lite software, MESUR® gauge 90-day trial, USB cable, USB driver, carrying case, and NIST-traceable certificate of calibration with data



Attachments click and lock into place via innovative Click-Lock™ technology, a rugged anti-rotation locking mechanism. The attachments may be clicked into 90° or 180° orientations. No fastening is required, as with conventional force gauges, reducing the risk of damage to the instrument.



## Capacities & Resolutions

Model	lbF	ozF	kgF	gF	N	kN
ME-100	100 x 0.05	1600 x 1	50 x 0.02	50000 x 20	500 x 0.2	-
ME-200	200 x 0.05	3200 x 1	100 x 0.02	-	1000 x 0.2	1 x 0.0002
ME-500	500 x 0.1	8000 x 2	250 x 0.05	-	2500 x 0.5	2.5 x 0.0005

## Alternative AC Adapter Prongs

All instruments include a 110V AC adapter with US prong style. Select an alternative prong adapter (if required) from the table below.

Model	Description
AC1120	Prong for AC adapter, 220V EUR
AC1121	Prong for AC adapter, 220V UK
AC1122	Prong for AC adapter, 220V AUS



AC1120



AC1121



AC1122

## Select individual accessories or pre-configured kits



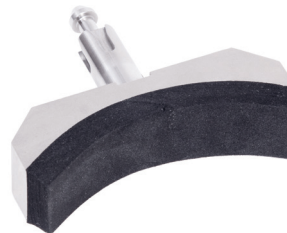
## Accessories

### Rectangular Pad E1003



- Pad dimensions:  
4.0 x 1.0 x 0.5 in.  
[102 x 25 x 13 mm]

### Curved Pad E1004



- Pad dimensions:  
1.0 in. [25 mm] deep  
3.2 in. [81 mm] radius  
0.5 in. [13 mm] thick

## Square Pad E1002



- Pad dimensions:  
1.0 x 1.0 x 0.5 in.  
[25 x 25 x 13 mm]

## Circular Pad E1005



- Pad dimensions:  
3.0 in. [76 mm] dia.,  
0.5 in. [13 mm] thick

## Snap Hook E1006



- Snap clasp, for added safety
- Swiveling action ensures proper alignment

## Chain / Hook Assembly E1007



- Includes E1006 hook and chain
- Chain length: 5 ft (1.5 m)

## Single Handle Grip E1008



- Ergonomic rubber-padded handle for a secure grip
- Attaches to force gauge via included thumb screws

## Double Handle Grip E1009



- Ergonomic rubber-padded handles, for a secure grip
- Attaches to force gauge via included thumb screws

## Pistol Grip E1010



- Ergonomic design for a secure grip
- Attaches to force gauge via included thumb screws

## Standard Grip Adapter E1011



- Adapts other Mark-10 grips via 5/16-18F thread
- Includes male/male stud with jam nuts

## Looped Cable E1012



- Braided stainless steel
- 43 in. [1,092 mm] length

## Myometer Accessory E1013



- Includes tabletop mounting kit for force gauge, strap, and mounting screws. Hook not included.



## Small Carrying Case E1000



- Shown populated with optional accessories.
- The following page lists the components compatible with each carrying case.

## Large Carrying Case E1001



- Shown populated with optional accessories.
- The following page lists the components compatible with each carrying case.

## Series EKE Kits - Included Items



Model No.	Description	Advanced Kits <sup>1</sup> EKE-100-1 / EKE-200-1 / EKE-500-1	Professional Kits <sup>1</sup> EKE-100-2 / EKE-200-2 / EKE-500-2
ME-100 ME-200 ME-500	Force gauge, 100 lbF / 500 N Force gauge, 200 lbF / 1,000 N Force gauge, 500 lbF / 2,500 N	✓	✓
E1002	Padded attachment, square	✗	✓
E1003	Padded attachment, rectangular	✓	✓
E1004	Padded attachment, curved	✓	✓
E1005	Padded attachment, circular	✗	✓
E1006	Clasp hook	✓	✓
E1007	Chain / clasp hook assembly	✗	✓
E1008	Single handle grip	✗	✓
E1009	Double handle grip	✓	✓
E1010	Pistol grip	✗	✓
E1011	Grip adapter	✗	✗
E1012	Looped cable <sup>2</sup>	✗	✗
E1013	Myometer accessory <sup>2</sup>	✗	✗
E1000	Carrying case, small	✓	✗
E1001	Carrying case, large	✗	✓

1. Kits include a force gauge with 110V AC adapter. See page 2 Alternative AC Adapter Prongs chart for international versions.

2. Does not fit into carrying cases. 3. Does not fit into carrying cases. Requires E1006 hook.