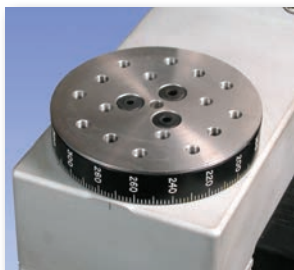


The TSTM torque test stand is ideal for a wide variety of applications requiring up to 100 lbFin (11.5 Nm) of torque, including closure torque testing, fastener torque testing, and more. Motorized clockwise and counterclockwise rotation allows for more precise and repeatable test results than with manual test stands. A lever-operated slider with travel stops makes engaging and disengaging samples quick and efficient. The stand includes a torque loading plate with tapped holes for grip and custom fixture mounting and an angle dial indicator. Modular mechanical design allows the stand to be configured for a variety of applications.

Specifications

Torque capacity:	100 lbFin [11.5 Nm]
Speed range:	0.3 - 8.6 RPM [4 - 52°/s]
Speed setting accuracy:	±5%, ±0% variation with load
Maximum angular travel:	No limit
Angular rate:	12° / adjustment knob revolution
Angle indicator resolution:	2°
Maximum slider travel:	15.5 in [394 mm] (column extensions available)
Slider travel rate:	1.047 in [26.6 mm] / lever revolution
Weight (without optional equipment):	TSTM: 35.5 lb [16 kg] / TSTMH: 29.5 lb [13 kg]
Included accessories:	Tool kit
Warranty:	3 years (see individual statement for further details)



^ Rotating torque plate includes a matrix of tapped holes for grip or fixture mounting



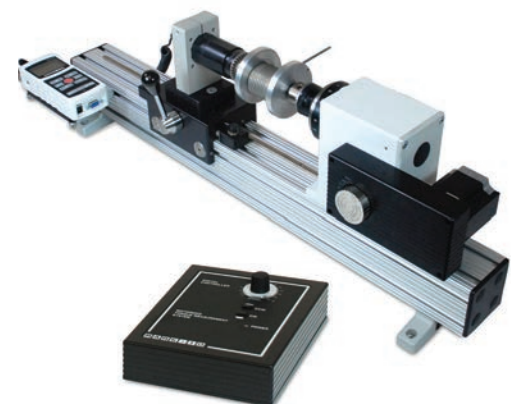
^ Optional digital angle indicator



The TSTM is shown in a cap torque test, with a Series R50 torque sensor, Model M5i force/torque indicator, G1023 universal closure grip, and G1053 cap grip

Optional Equipment

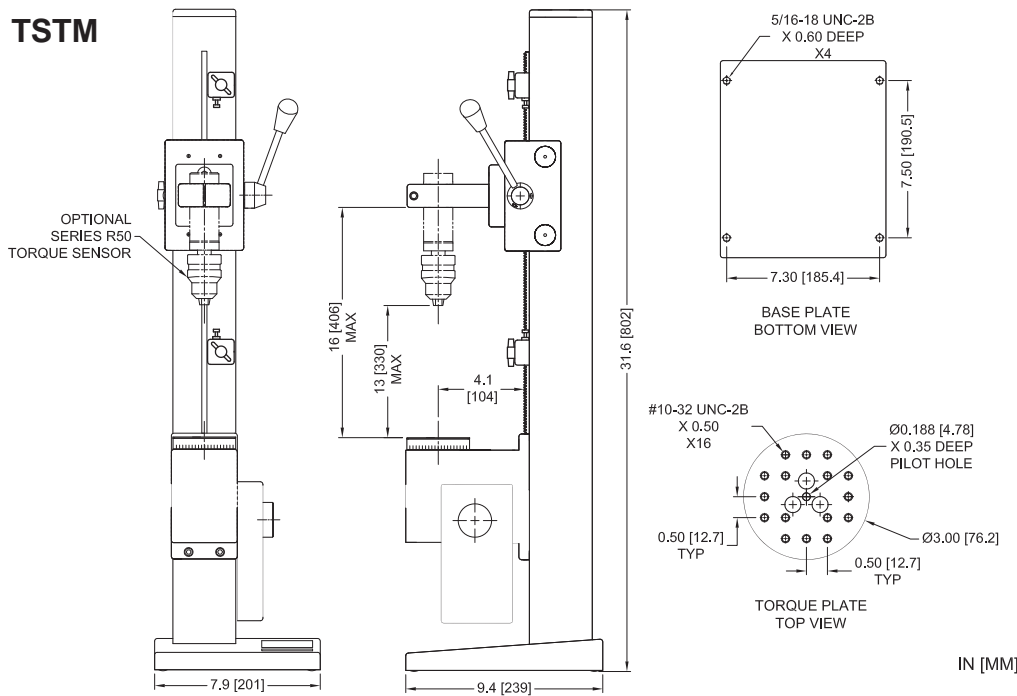
TST01 Digital angle indicator	Displays CW or CCW angle with 0.1° resolution for approximately 278 rotations, resettable with zero button. Accurate to ±0.7°. Three sets of mounting holes allow the indicator to be mounted perpendicular to, or parallel to the test stand column. It can also be repositioned along the column.
Series R50 Torque sensors	Series R50 sensors are recommended for use with Mark-10 torque test stands, available in 6 capacities, from 10 ozFin to 100 lbFin (7 to 1,150 Ncm). Mount directly to the test stand.
Force/torque indicator	Displays the torque value. Select from basic and advanced models.
Series TT03 Torque gauge	Basic integrated torque gauge for various applications. Available in the same 6 capacities.
Set point / overload protection cable 09-1180	Stops test stand travel at programmable high and low torque set points. Also protects the torque sensor against accidental overloads. Compatible with certain indicator models. Can be used simultaneously with the USB data output cable supplied with the indicator.



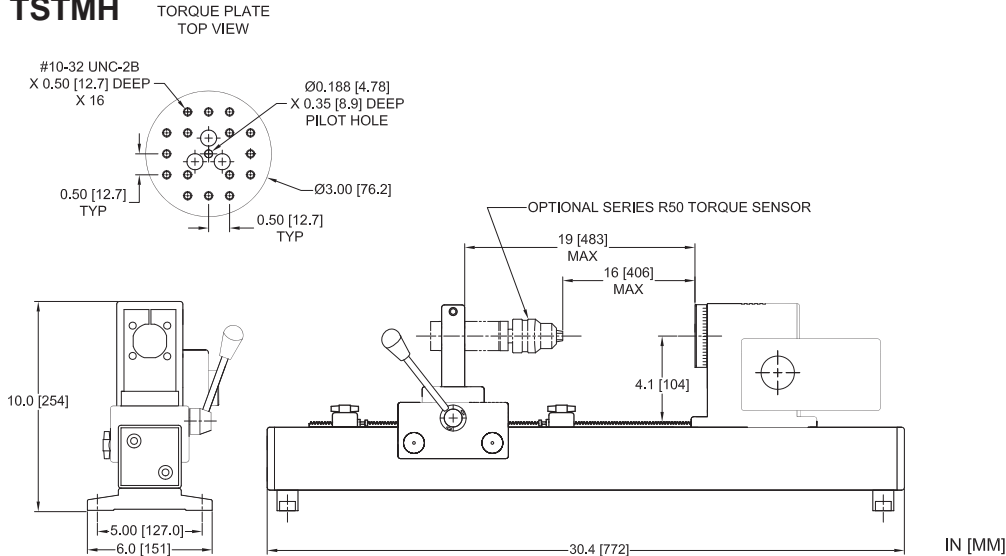
The TSTMH is shown in a torsion spring test, with a Series R50 torque sensor and Model M5i force/torque indicator

Dimensions

TSTM



TSTMH



Ordering Information

Model No.	Description
TSTM	Torque test stand, motorized, vertical, 100 lbFin, 110V
TSTMH	Torque test stand, motorized, horizontal, 100 lbFin, 110V
TST001	Digital angle display for TSTM/TSTMH, 110V
TST001E	Digital angle display for TSTM/TSTMH, 220V Euro
09-1180	Cable, set point/overload protection, indicator to stand

The TSTM/TSTMH contains a universal power supply (80 - 240V) and includes a 110V US power cord. Add suffix 'E' for Euro cord, 'U' for UK cord, or 'A' for Australian cord.

Ex: TSTM, TSTMU, TSTMHA